

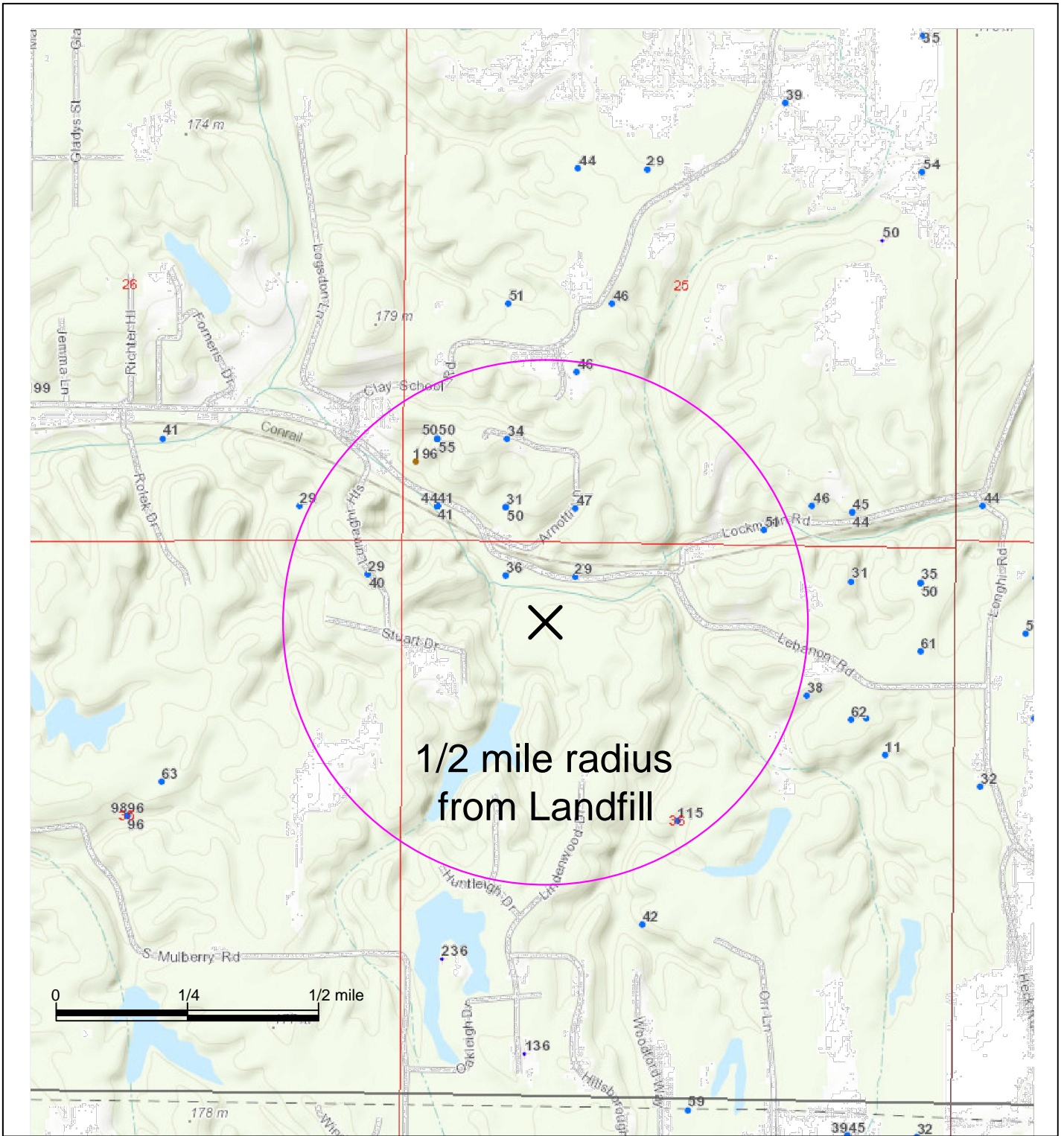
Attachment 14

Location of Water Wells within 2,500 feet of the Closed Collinsville Landfill

Collinsville, IL

Source: Illinois State Geological Survey Water Well Database

July 31, 2015.



Labels indicate Total Depth in Feet

P:\Subway\Collinsville\Petition for adjusted standards\2015New or revised exhibits\Water Well Database .DWG



TETRA TECH

www.tetrattech.com

1634 Eastport Drive
Collinsville, IL 62234
PHONE: 618-345-0669 FAX: 618-345-1281

Drawing Description

Illinois Water Well Database

Collinsville Landfill
Collinsville, Illinois

Project No.: 33826

Date: August 2015

Drawn By: RMN

Figure Number

1